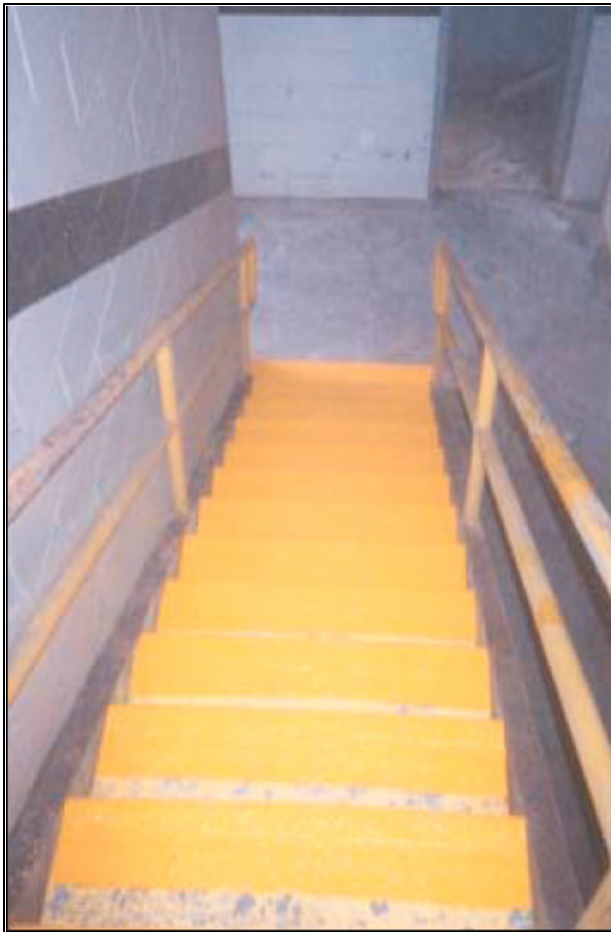
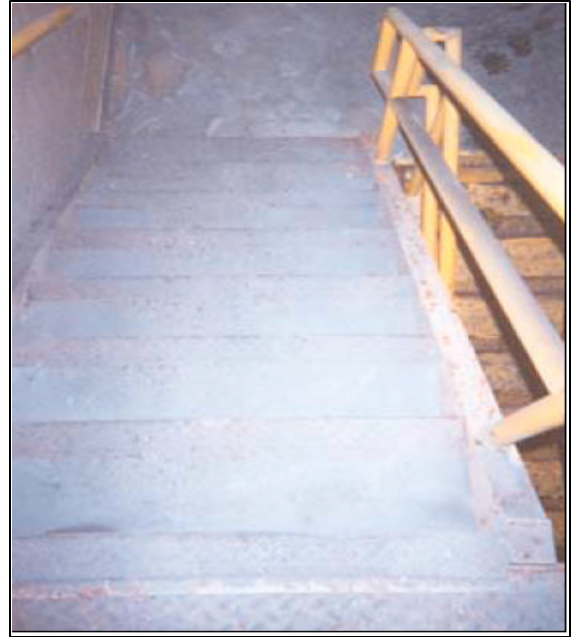




## Project: Hydroelectric Plant Stairs

### The Problem

This hydroelectric plant had severe problems with moisture accumulations on their steps at level -36.



### The Solution

RPT pressure washed and hand tooled the concrete and steel treads. **Thortex Corro-Tech GP** was applied to the steel nosing followed by a 40-mil coat of **Thortex Grip-Tech** with aluminum oxide as the aggregate.

**Thortex Corro-Tech GP** is a high-performance, anti-corrosive coating for use on new and existing steel structures for long-term protection where surface preparation is restricted.

**Thortex Grip-Tech** is a high-performance, solvent-free, epoxy coating used (with the addition of an aggregate) as a universal slip deterrent for mineral and metallic surfaces.