

Thortex Ceramic Resurfacing Systems

Thortex Ceramic Resurfacing Systems

- ★ Excellent abrasion & impact resistance
- ★ Solvent-free systems
- ★ No sagging or slumping during application
- ★ Excellent adhesion to metal surfaces
- ★ Good resistance to industrial chemicals

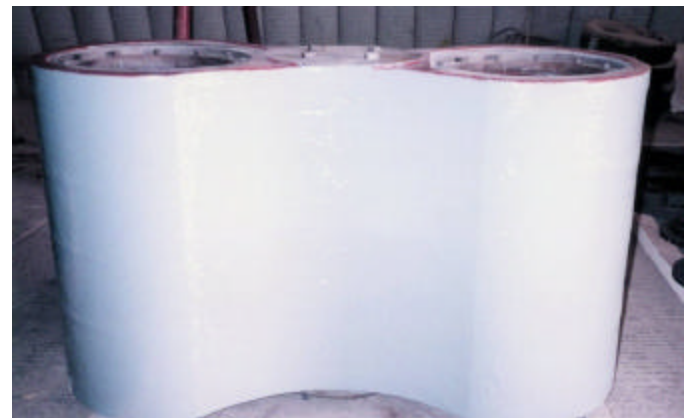


Call your **Thortex** sales representative today to find out which of the **Thortex Ceramic Resurfacing Systems** products are right for your application needs.

Thortex Ceramic Resurfacing Systems offer an **EXTENSIVE RANGE OF SYSTEMS**. Their **ADVANCED POLYMER TECHNOLOGY** and **AWARD WINNING TECHNOLOGIES** offer **LONG-TERM PROTECTION** for your equipment and facilities.

The Thortex Ceramic Resurfacing Systems are ideal for:

- ★ Pumps
- ★ Condenser Tube Sheets
- ★ Heat Exchangers
- ★ Impellers & Propellers
- ★ Pipe Repairs
- ★ Valves
- ★ Blower Lobes & Casings
- ★ High Temperature Components
- ★ Water Boxes
- ★ Chutes & Hoppers



Thortex America, Inc.

12 Iron Bridge Drive • Collegeville, PA 19426
800.578.2772 • 610.831.1910 (fax)
www.thortex.com

Thortex Ceramic Resurfacing Systems

Cerami-Flex EG

Drying/Cure Times @ 68°F:

Usable Life	20 min	Touch Dry	2 hrs
Hard Dry	4 hrs	Full Cure	7 days
Tensile Strength	ASTM D412		2825 psi
Abrasion Resistance	0.08 ml loss per 1000 cycles		1 kg load CS 17 Wheel
Corrosion Resistance	ASTM B117		Unaffected after 5000 hrs exposure
Impact Resistance	ASTM D256		175 ins lbs
Flexibility	ASTM D522-4		30%

Cerami-Flex FG

Drying/Cure Times @ 68°F:

Usable Life	20 min	Touch Dry	2 hrs
Hard Dry	4 hrs	Full Cure	7 days
Tensile Strength	ASTM D412		2825 psi
Abrasion Resistance	0.08 ml loss per 1000 cycles		1 kg load CS 17 Wheel
Corrosion Resistance	ASTM B117		Unaffected after 5000 hours exposure
Impact Resistance	ASTM D256		175 ins lbs
Flexibility	ASTM D522-4		30%

Cerami-Tech CR

Drying/Cure Times @ 68°F:

Usable Life	45 min	Touch Dry	6 hrs	Full Cure	7 days
Min Overcoating	6 hrs	Max Overcoating	48 hrs		
Abrasion Resistance	0.08 ml loss per 1000 cycles				
	ASTM D4060				
Shore D Hardness	85				
Tensile Shear Adhesion	2500 psi (Grit Blasted Steel)				
	ASTM D1002				
Corrosion Resistance	Excellent, unaffected after 10,000 hours exposure				
	ASTM B117				
Flexural Strength	ASTM D790		8100 psi		
Compressive Strength	ASTM D695		10000 psi		
Impact Resistance	ASTM D256		355 in lbs		

Cerami-Tech EG

Drying/Cure Times @ 68°F:

Usable Life	25 min	Initial Set	1 hr
Machining	2 hrs	Full Mechanical	5 days
Compressive Strength	ASTM D695		15000 psi
Tensile Shear Adhesion	2500 psi Grit Blasted Steel		
	ASTM D1002		
Flexural Strength	ASTM D790		10000 psi
Hardness (Rockwell R)	ASTM D785		100
Abrasion Resistance	0.06 ml per 1000 cycles - 1 kg load/CS17 Wheel		
	ASTM D4060		
Nuclear Decontamination	BS 4247 Part 1		Excellent
Max Operating Temp	Wet - 250°F		
	ASTM D2485		
	Dry - 395°F		

Cerami-Tech FG

Drying/Cure Times @ 68°F:

Usable Life	25 min	Initial Set	3 hrs
Machining	6 hrs	Full Mechanical	5 days
Compressive Strength	ASTM D695		13000 psi
Tensile Strength	2800 psi (Grit Blasted Steel)		
	ASTM D1002		
Flexural Strength	ASTM D790		9000 psi
Rockwell Hardness	ASTM D785		100
Abrasion Resistance	0.065 ml loss per 1000 cycles (CS17 wheel 1 kg load)		
	ASTM D4060		
Corrosion Resistance	ASTM B117		5000 hrs
Max Operating Temp	Wet - 250°F		
	ASTM D2485		
	Dry - 395°F		

Cerami-Tech HTX

Drying/Cure Times @ 68°F:

Usable Life	45 mins	Initial Set	6 hrs
Min Overcoat	6 hrs	Max Overcoat	24 hrs
Abrasion Resistance	0.086 ml loss per 1000 cycles - 1 kg load/CS17 wheel		
	ASTM D4060		
Compressive Strength	ASTM D695		20730 psi (post cure)
Corrosion Resistance	ASTM B117		5000 hrs
Flexural Strength	ASTM D790		9700 psi (post cure)
Tensile Shear Adhesion	2800 psi (Grit Blasted Steel)		
	ASTM D1002		
Max Operating Temp	Wet - 356°F		
	ASTM D2485		
	Dry - 482°F		

Chemical Resistance

The entire Thortex Ceramic Resurfacing line possesses outstanding resistance to a wide variety of substances. Check with your Thortex Sales Representative to find out which products are right for your repair / protection projects.

For complete technical information about a specific Thortex Ceramic Resurfacing product, please refer to the individual Tech Data Sheets available at www.thortex.com or call 800.578.2772.

Thortex America, Inc.

12 Iron Bridge Drive • Collegeville, PA 19426
800.578.2772 • 610.831.1910 (fax)
www.thortex.com